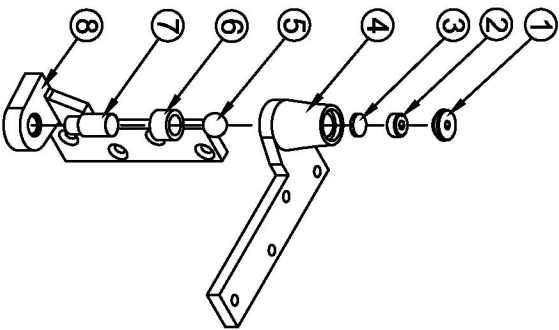


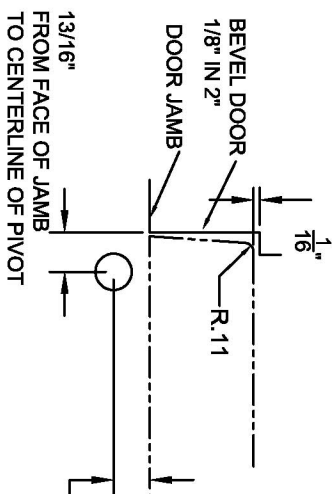
0195 PIVOT SET 3/4" OFFSET

BOTTOM PIVOT



ITEM NO.	QTY.	PART NO.
1	1	0195 RETAINER SCREW
2	1	0195 SET SCREW
3	1	0195 ADJUSTMENT LOCKING DISC
4	1	0195 BOTTOM PIVOT DOOR PORTION
5	1	0195 ALIGNMENT BALL
6	1	0195 NEEDLE BEARING
7	1	0195 PIVOT PIN
8	1	0195 BOTTOM PIVOT JAMB PORTION

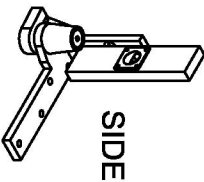
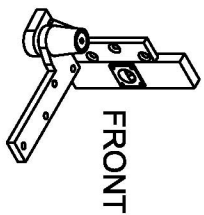
NOTE:
AFTER BOTTOM PIVOT INSTALLATION IS COMPLETE ITEM #1 (END CAP) MUST BE TIGHTENED SECURELY.



1. INSTALLING PIVOT SET
 - A. MEASURE $1\frac{1}{16}$ " OUT FROM DOOR
 - B. ALLOW $\frac{1}{8}$ " MIN. CLEARANCE FROM DOOR STOP TO DOOR FACE.
 - C. MEASURE DOOR THICKNESS AND $A\frac{3}{4}$ ". WHERE THESE LINES INTERSECT DETERMINES THE CENTERLINE OF THE PIVOT.

13/16"
FROM FACE OF JAMB TO CENTERLINE OF PIVOT

LEVEL EACH WAY

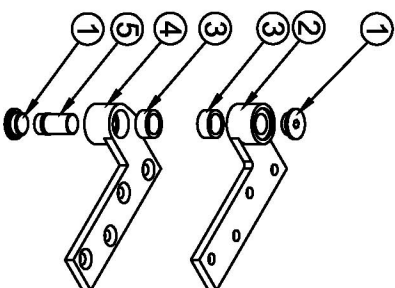


2. SET PIVOT SET
 - A. MORTISE JAMB TO RECEIVE JAMB LEAF AS SHOWN ON REVERSE SIDE.
 - B. CARE MUST BE EXERCISED TO SEE THAT PIVOT END OF JAMB IS LEVEL. PLACE LEVEL AS PER ILLUSTRATION.

ITEM NO.	QTY.	PART NO.
1	2	0180 END CAP
2	1	0180 JAMB PORTION
3	2	0180 NEEDLE BEARING
4	1	0180 DOOR PORTION
5	1	0180 PIVOT PIN

NOTE:
AFTER TOP PIVOT INSTALLATION IS COMPLETE ITEM #1 (END CAP) MUST BE TIGHTENED SECURELY.

TOP PIVOT



IMPORTANT:
USE PLUMB LINE TO MAKE SURE THAT CENTERLINE OF TOP PIVOT PIN LINES UP WITH THE CENTERLINE OF SIDE JAMB PIVOTS

3. INSTALL TOP PIVOT AND PIVOT ARM
 - A. INSTALL TOP PIVOT IN DOOR PER TEMPLATE LOCATED ON REVERSE SIDE.
 - B. INSTALL TOP PIVOT IN FRAME PER TEMPLATE LOCATED ON REVERSE SIDE.
 - C. INSTALL ARM IN DOOR PER TEMPLATE LOCATED ON REVERSE SIDE.
 - D. CENTERLINE OF PIVOT SHOULD LINE UP WITH CENTERLINE OF SPINDLE (SEE ILLUSTRATION).
 - E. IF SIDE JAMB PIVOT IS USE, REFER TO REQUIRED TEMPLATE FOR INSTALLATION.

