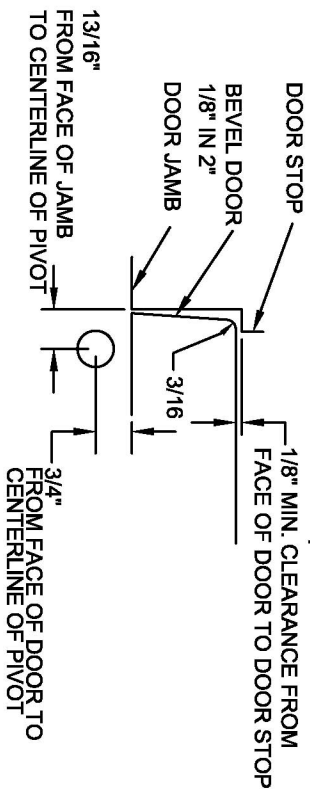
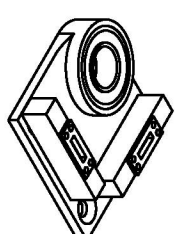


0147 3/4" OFFSET PIVOT SET



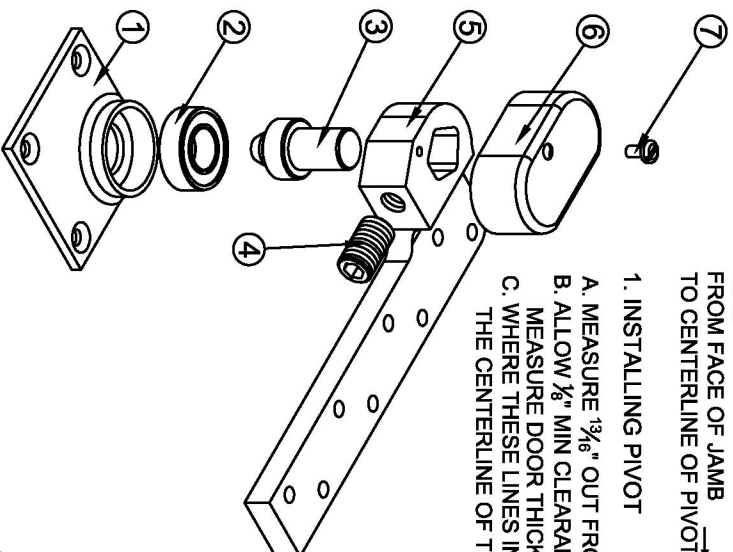
1. INSTALLING PIVOT

- MEASURE $\frac{3}{16}$ " OUT FROM DOOR JAMB.
- ALLOW $\frac{1}{8}$ " MIN CLEARANCE FROM DOOR STOP TO DOOR FACE.
- MEASURE DOOR THICKNESS AND ADD $\frac{3}{4}$ ".
- WHERE THESE LINES INTERSECT DETERMINES THE CENTERLINE OF THE PIVOT.

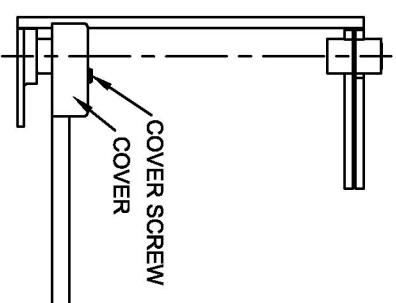


2. SET PIVOT SET

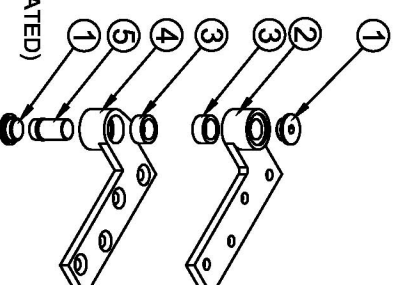
- PREPARE FLOOR TO RECEIVE FLOOR PORTION. SET ANCHORS PROVIDED SECURELY IN FLOOR.
- IMPORTANT: FLOOR PORTION MUST BE LEVEL. LEVEL IN BOTH DIRECTIONS PER ILLUSTRATION.
- FLOOR PORTION SHOULD BE PARALLEL WITH CENTERLINE OF DOOR.



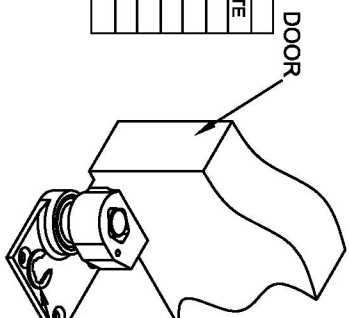
| ITEM NO. | QTY. | PART NO. |
|----------|------|---------------------------|
| 1 | 1 | 0147 FLOOR MOUNTING PLATE |
| 2 | 1 | 0147 BALL BEARING |
| 3 | 1 | 0147 PIVOT PIN |
| 4 | 1 | 0147 SET SCREW |
| 5 | 1 | 0147 ARM |
| 6 | 1 | 0147 COVER |
| 7 | 1 | 0147 COVER SCREW |



- IMPORTANT:
USE PLUMB LINE TO MAKE SURE THAT CENTERLINE OF TOP PIVOT PIN LINES UP WITH THE CENTERLINE OF SIDE JAMB PIVOTS
- INSTALL TOP PIVOT AND PIVOT ARM
 - INSTALL TOP PIVOT IN DOOR PER TEMPLATE
 - INSTALL TOP PIVOT IN FRAME PER TEMPLATE.
 - INSTALL ARM IN DOOR PER TEMPLATE.
 - CENTERLINE OF TOP PIVOT SHOULD LINE UP WITH CENTERLINE OF PIVOT ARM. (USE PLUMB LINE AS ILLUSTRATED)
 - IF SIDE JAMB PIVOT IS USED, SEE REQUIRED TEMPLATE.



| ITEM NO. | QTY. | PART NO. |
|----------|------|---------------------|
| 1 | 2 | 0180 END CAP |
| 2 | 1 | 0180 JAMB PORTION |
| 3 | 2 | 0180 NEEDLE BEARING |
| 4 | 1 | 0180 DOOR PORTION |
| 5 | 1 | 0180 PIVOT PIN |



- HANG DOOR
- SET DOOR ON PIVOT SET SPINDLE
- PUSH TOP PIVOT PIN IN PLACE AND TIGHTEN 0180 END CAP (ITEM #1).
- IF DOOR DRAGS AT FLOOR (OR THRESHOLD, IF USED) LOOSEN ARM LOCKING SCREW AND RAISE DOOR TO DESIRED CLEARANCE AND INSERT ONE OR MORE $\frac{1}{16}$ " THICK SHIMS. RETIGHTEN ARM LOCKING SCREW SECURELY.
- PUT ARM COVER (ITEM #6) ON AND SECURE TIGHTLY WITH COVER SCREW (ITEM #7).

SHIM SNAPS BETWEEN ITEM #3 (PIVOT PIN) AND ITEM #5 (ARM).

NOTE:
AFTER TOP PIVOT INSTALLATION IS COMPLETE ITEM #1 (END CAP) MUST BE TIGHTENED SECURELY.